

LOFTEC

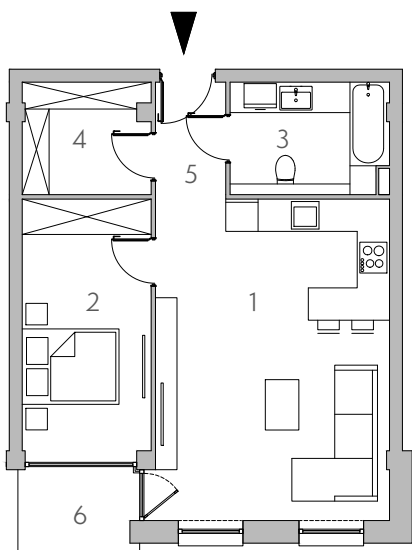
APARTAMENTY

APARTAMENT

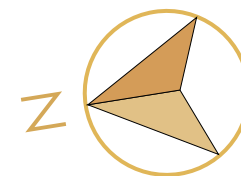
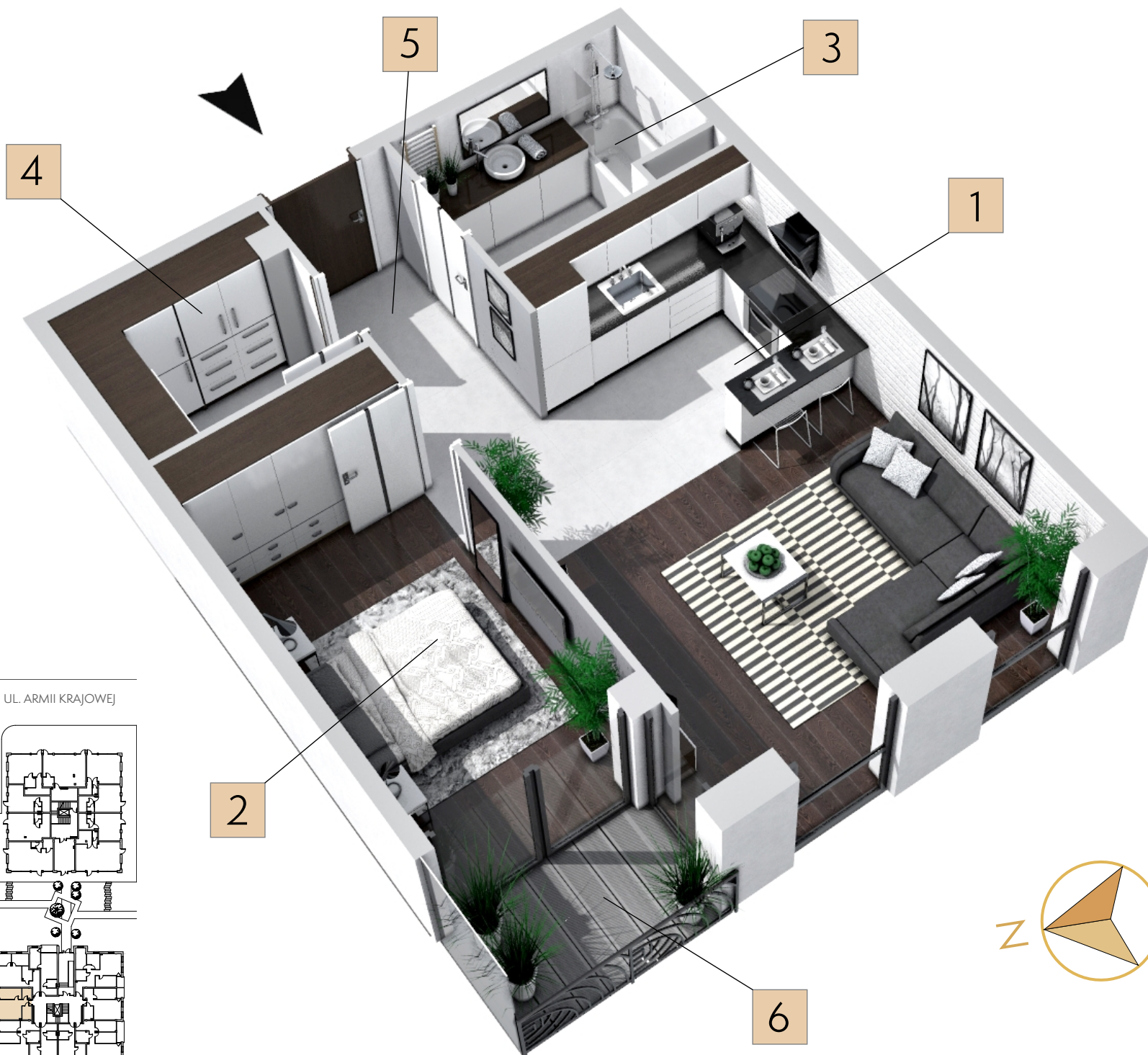
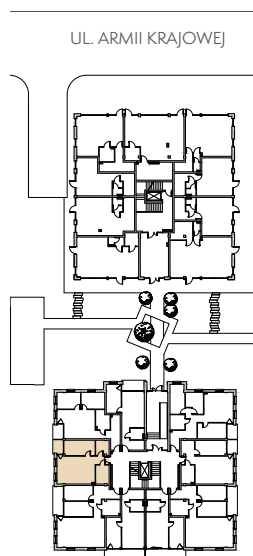
50,07m²

35

KLATKA B
PARTER



1. SALON + KUCHNIA	25,47m ²
2. SYPIALNIA	11,09m ²
3. ŁAZIENKA	6,01m ²
4. GARDEROBA	4,74m ²
5. KORYTARZ	2,76m ²
6. TARAS	3,36m ²



BIURO SPRZEDAŻY: Ełk, ul. Nadjeziorna 19/U1 tel. 733 11 11 33