

LOFTEC

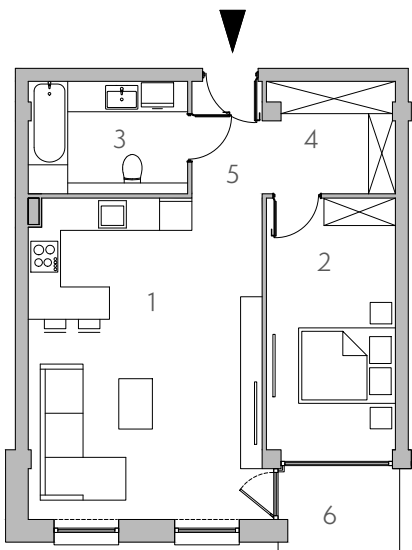
APARTAMENTY

APARTAMENT

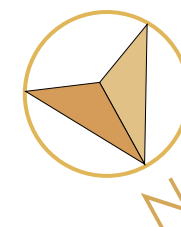
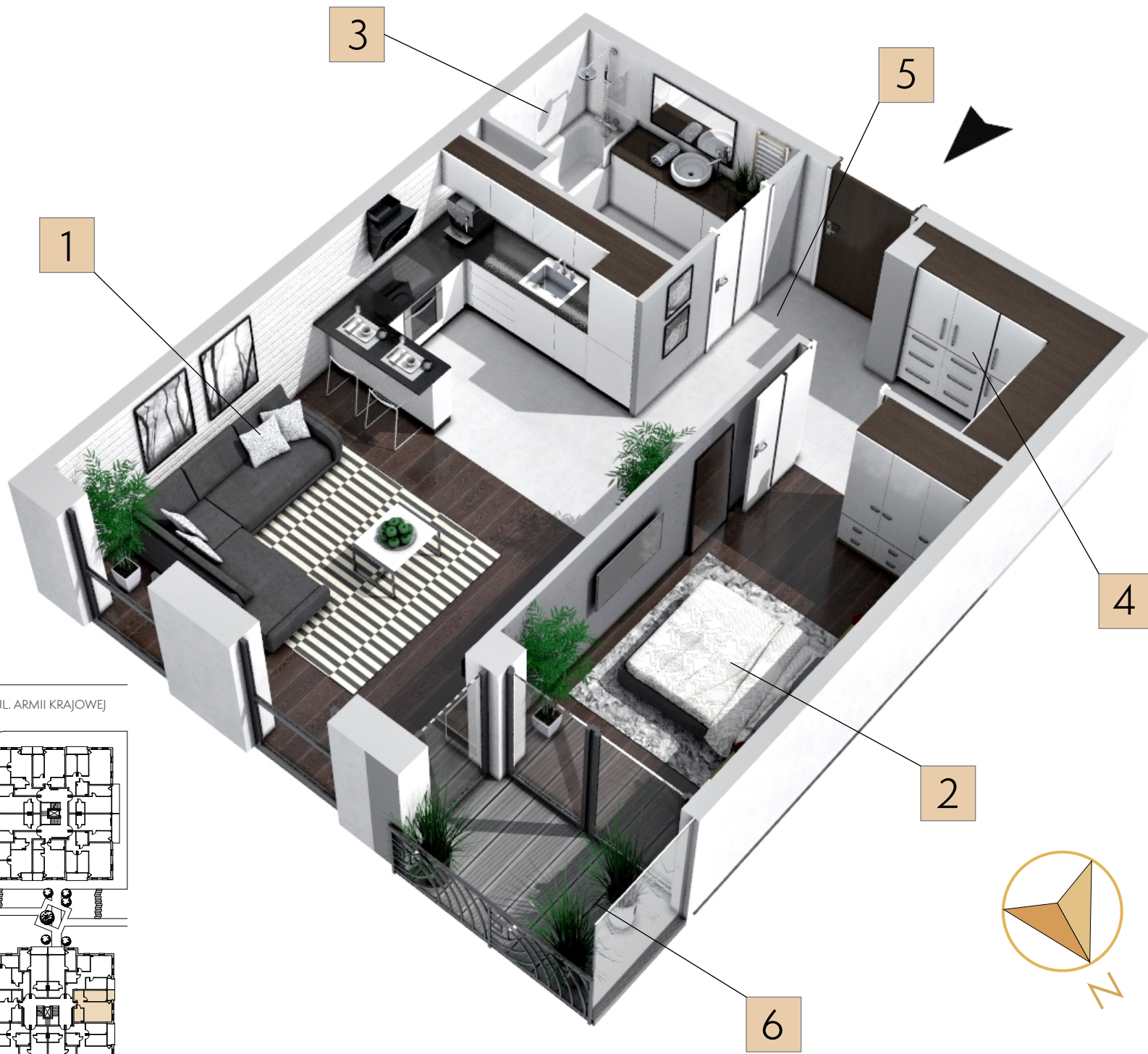
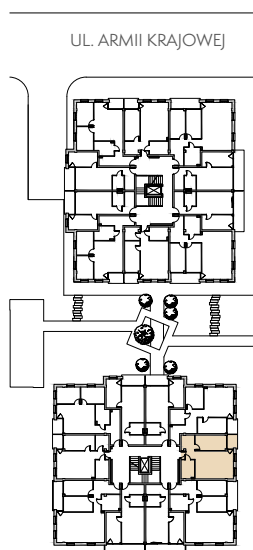
50,22m²

50

KLATKA B
PIĘTRO 2



1. SALON + KUCHNIA	25,61m ²
2. SYPIALNIA	11,09m ²
3. ŁAZIENKA	5,87m ²
4. GARDEROBA	4,89m ²
5. KORYTARZ	2,76m ²
6. TARAS	3,36m ²



BIURO SPRZEDAŻY: Ełk, ul. Nadjeziorna 19/U1 tel. 733 11 11 33